

# NEWSLETTER



JUNE 2023

*“Working with the Grower to Create Healthy Orchards”*



Photo: Green Lacewing Juvenile

## From the Office

Thank you everyone for your messages of support. We have all been going through some tough times and it is so nice to know we are all here to work together for the same end results. Please come and talk to us if you have any special requirements or ideas that may work better for all of us. Our email is [officeadmin@cropcheck.co.nz](mailto:officeadmin@cropcheck.co.nz) and our phone number is 072 811 034.

David has recovered well from his heart surgery and is now nearly fully back at work after 2 years of illness. He is now slowly working on improving his fitness and it is nice to look forward and plan for better times.

We have a new AvoGreen monitor in the Katikati area. David Colthorpe is a small grower from Katikati who trained as an Owner-Operator some time ago. He will phone the growers he will be looking after in the next couple of weeks. At times David may also help Caz with some of the orchards around Pahoia or Whakamarama.

## BUG UPDATES

### • Leafroller

This is generally a quiet time of year for Leafroller, but we are still seeing a number of these insects between fruits. As they are doing a lot of damage, it would be wise to take action for them if you are spraying for Thrip.

### • NZ Flower Thrip

These Thrip will be present in the orchards if you have Winter flower coming out. Many orchards do have flower on the trees due to the low fruit load in the orchards.

### • Six-spotted Mite

Have increased now. If you are over 10% between now and Spring flowering, it is wise to take action. Check with your packhouse for the best product to use. This will depend on when you are picking.

### • Mealybug

There are a lot more Mealybug around this year. This will be due to the damp conditions and the reduced spray applications this year.

### • Scale

Scales will have recently hatched and moved. With the reduced spraying, they could increase in number over the coming year. Please note, scale only increase slowly with 2 - 3 generations per year.

### • Greenhouse Thrip

Traditionally we have thought of winter as the time Thrip will die off. We have noticed that the 2nd wave of Thrip have not been as severe this year. We are not sure why. It could be because of the weather or changes in the sprays that were applied early? We would love your suggestions.

### • Fullers Rose Weevil (FRW) damage and live

There is a bit of chewing around on the trees from Fullers Rose Weevil but it generally comes within the acceptable amount so it may not be recorded on monitoring results.

### • Natural Predators

There is a movement today towards using predators or biological controls rather than the traditional sprays we have come to accept as the only way to get rid of bugs. Using biological controls, along with sprays and good plant health is the aim of a true IPM program. It is recommended to look at a combination of methods to produce a good, balanced and clean fruit.

### • Blueberry Pests

It is now pruning time for the outdoor plants. In fact many blocks may have completed pruning by now.

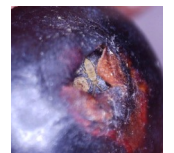
Tunnel houses are coming up to harvest soon and preharvest monitoring will be starting now.

Have you watched the webinar on IPM from the end of May? We found the talk from Agriscience extremely interesting. We are intending going to visit their offices as soon as we can.

### • Blueberry Field Days

Have you registered for the Field Days in Katikati on 19th - 20th June? Sam needs to have your registration now for catering. So far, the numbers of attendees are very low. Please come and say hello to us. The discussion on pests and diseases should be very interesting as will the visit to Darling Orchards in Woodlands Road. We are looking forward to visit the orchards in Waihi on the 2nd day. The link for registration is provided by Sam.

Photo: Springtail on a Blueberry



#### Please note:

Even though we have good knowledge in insects, we cannot advise you to stop spraying and use only predators. We also cannot advise you what chemicals to spray. Please work with your industry advisers for best advice.



# NEWSLETTER

JUNE 2023

*Working with the Grower to Create Healthy Orchards"*

## WEATHER EVENTS

Our lawn has become a mess with all the continual rain. It's going to take quite a bit to get it sorted and the grass growing again. As we have visited many orchards, we are seeing the effects of the rain, with trees going yellow and dropping leaves. Always check for mites as this is the major cause of leaf-drop, but trees being affected by wet feet will look different. Making sure water is draining away from trees as much as possible is important.

## SAFETY NEWS

The two biggest issues we are dealing with:

- **Wet ground** - This is not something that can be avoided with the very wet weather we have been having. If there are areas in your orchard that are particularly wet, please let our staff know of any areas to avoid.
- **Sprays** - We would like to remind you that we do not allow our staff to enter an orchard **within 14 days of spraying (28 days for Paramite)**.

**Note:** We can enter blocks that have been sprayed with organic products earlier e.g. BT or Pyrethrum.

There are two reasons for this:

1. We cannot get a clear picture of how effective a spray has been earlier than this, therefore it is wasting you money.
2. Because our monitors are in so many orchards, they become very sensitive to repeated exposure to sprays. We do not want them being exposed to anymore sprays than necessary.

## CROPCHECK CLOUD

Our Client Cloud is currently undergoing a full rebuild following a cyber attack on one of the Servers where our cloud is hosted. The attack was discovered and disabled before it completed and any data was stolen. To be absolutely sure we have totally rebuilt or restored our entire Data Centre from Scratch, we have also upgraded equipment and Firewalls at the Edge of our Network to make our Data Centre as secure as it possibly can be. We are currently in the process of reloading your AvoGreen Monitoring Data and documents followed by historical invoices and health and safety. We have also started to send out new connection links, Usernames and a new and very secure 16 Digit Password. Some months ago we stopped sending Invoices and documents by post after having mail stolen on more than one occasion and soon we will be making the Cloud our primary means of delivering Invoices, Newsletters and other documents to you as we are finding that email can be quite unreliable, even more so than traditional post. If you have any questions or concerns please contact David at the CropCheck Office.

## SOIL TESTS

We did not advertise soil tests this year. We have had some growers request them, but it is really too late to do the soil tests now for this year. If you require one, we can still send them off to the laboratory but this would be only in certain circumstances (e.g. you have just purchased your orchard).



Need a monitoring specialist or know someone who does? Let's chat!

**CropCheck Limited**

Address : 424 Upper Ohauti Road, Ohauti RD 3, Tauranga 3173

Phone : 07 281 1034

Email : [officeadmin@cropcheck.co.nz](mailto:officeadmin@cropcheck.co.nz)

Website : [cropcheck.co.nz](http://cropcheck.co.nz)