



“Working with the Grower to Create Healthy Orchards”



Changepoint Church in Poike Rd, Tauranga

Newsletter December 2022

From the Office

As I came in from the garden this morning, I was reflecting on this past year. It has been a very hard year for all of us in many ways. But we need to remember to take our eyes off the problems around us and focus on the special moments.

You will have noticed the invoices are a bit late this month. This is due to David being in hospital and our new office lady still learning how to do the invoicing. Jes is learning very fast and will be a lot more efficient next month.

Jes would love to hear from you and get to know you. She took over from Argine one month ago, when Argine moved to Hamilton to work for Westpac Bank, who are going to sponsor her to complete her accounting studies.

As Jes has a good knowledge of websites and graphics, I am going to work with her over the next few weeks to redesign the newsletter and update the website. She will also be starting Avogreen training.

China Growers

We are finding it harder and harder to keep track of the current China Growers, as very few are keeping us informed. Therefore, all growers will be treated as if they are registered for China and given the China advice, unless you are definitely Local Market.

Avocado Problem Solver Guide

We recently managed to obtain a copy of The Avocado Problem Solver Field Guide; this is a very valuable book to have in our library. As I have been browsing through the book, it certainly shows how little we really have that attack our trees in New Zealand. On page 83, they show photos of Garden weevil damage. The damage is exactly the same as damage we have seen here that I thought was Bronze beetle damage. I could be wrong, but really more investigation needs to be done. I will talk to NZ Avocado about it. Meanwhile, if you see chewing, talk to your monitor and show them. They will be able to identify it or they will send me photos.

Please note: Even though we have good knowledge in insects, we cannot advise you to stop spraying and use only predators. We also cannot advise you what chemicals to spray. Please work with your industry advisers for best advice.



Bug Update—Avocados

Leafroller - Leafroller numbers are increasing. Our advice is to spray as soon as you are over threshold on the monitoring sheet for Leafroller, then do a followup spray with your free spray if you have had previous damage. Alternatively, if there are signs of Leafroller chewing on leaves or they are present but not over threshold, it would be advisable to get a spray on now to stop the caterpillar chewing your new fruit. This will be the spray that can be applied without a monitoring to justify it and is for Leafroller only.

Greenhouse Thrip – there are some Thrip adults and juvenile being found. If you are delaying pick till the New Year, these will damage your fruit. It is advisable to do something about the Thrip early, rather than leaving them. I’m sure you are aware of the new withholding periods on Thrip sprays and are planning accordingly.

NZ Flower Thrip - some are still being seen, but in low numbers.

Six Spotted Mite - these are still around, but in lower numbers, with high numbers of Stethorus Bifodus predators.

Scale - are increasing a little, as they do at this time of the year. When the Thrip sprays are applied, Scale should disappear.

Fullers Rose weevil (FRW) damage and live - It’s the time of year when we see an increase in Fullers. This is often confused with Bronze Beetle chewing, which can occur all over the tree, but particularly in the top. Fullers climb, unlike Bronze beetle, which fly, so will be found lower in the tree.

Mealybug - are around in low numbers, so are not being recorded. As they are one of the Scale family, we expect to see them increasing now—December-January, March-April.

Natural Predators—have you checked out Bioforce or Zonda websites? Or spoken to them? They are very knowledgeable, though if they advise you to spray before introducing predators, make sure the spray is on the approved list. This applies to all crops.





NOTE: introducing predators into an orchard that has very high pest numbers, does not often work, as it takes a long time to get high enough predator numbers to make any significant difference. Using Biological control, needs to be done along side other controls.



Safety News

Bees are now gone, the ground has mostly dried out and we are into Leafroller sprays, shortly followed by Thrip sprays. Our stand down time for entering the orchard is 14 days for all the sprays being applied now, unless it is BT. We can enter the orchard more quickly if that is the insecticide of choice. Also if you are spraying weed sprays, please tell your monitor before they enter the orchard.

We are looking out for hazards as we are walking through your orchard and may note new hazards on the monitoring sheet. We can become so familiar with a hazard, it is not seen as something to be cautious of, but a new person on your property may not see the hazard and have an accident.

Blueberries—since our last newsletter, we have had the frost on 7th October. This has been a major disruption to everyone's lives over the last 2 months. We are amazed at the caring environment within the Blueberry industry, with the many emails and phone calls following the frost, checking in to make sure everyone is ok and coping, getting help for those that needed it.

The week before the frost, the new monitoring protocol was announced and was being rolled out. This was not enforced after the frost, however we are using the new protocol with all blocks that are now coming back on to monitor. If you are going to be exporting crop in the New Year, please contact us so we can put you on the schedule for monitoring.

We started using the new Monitoring Request forms just before the frost; this was stopped at that point, but needs to be instigated again now. We will email you a copy so you can fill it in and send to us or give to our staff when they get there to monitor.

It is also now important that we get contracts in place for all blocks, which includes your grower number. If you do not have a grower number, contact the office and we will find out how to get one.



Weather events

At last, the weather patterns seem to have changed and we are heading into Summer weather. I'm not a weather guru, but it feels like the weather cycle is more like it was 5 or more years ago.

It looks like we could have a wet Christmas, then the weather could be hot and dry during January to March. Or it could be wet and humid?



Avogreen© Registration

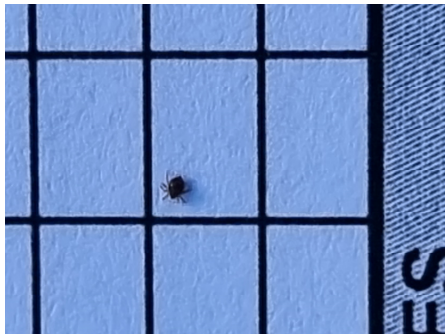
There are still some growers who have not returned their Avogreen Registration. We are about to be audited; if you are the grower who is audited and we cannot produce the registration, you will not be allowed to export. We will make every attempt we can to contact you, but please help us by replying.



Overdue Invoices

If you are owing us money, please pay. We are not a large company with a lot of resources to draw on, therefore we need your payment to pay our staff. We are aware that some of you are suffering genuine hardship; if this is the case, please talk to us so we can make an arrangement with you.

If you have not received your invoice, or any monitoring reports, please email us on officead-min@cropcheck.co.nz. This will most likely apply to those with Gmail accounts.



An Oribatid mite found in Blueberries on 01/12/22. This feeds on breaking down plant matter, usually in the soil. Size of a pin head.

ENQUIRE NOW

Crop Monitoring



- Avocado
- Citrus
- Blueberries
- Export Flowers
- Other Crops
- Soil & Leaf Tests

It's Christmas time again

A time of reflection

A time of love

Of pain

Come

In Love



And care for each other

MERRY CHRISTMAS

Contacts:

Office: 07 281 1034

Cathy Harris mob: 027 235 3919

David Harris mob: 0274 988 440

Email: sales@cropcheck.co.nz

Website: www.cropcheck.co.nz

Address: 424 Upper Ohauti Road, Ohauti RD3,
Tauranga 3173



©CropCheck Limited 2010 - 2022
Some Clipart by GraphicsFactory.com

E. & O.E.