



“Working for the Grower”



**Newsletter
December 2013**

From the Office

We are training 2 new staff members in the field at present. With an expanding client base plus extending the area we operate in, more staff may yet need to be taken on. If you are an Owner Operator in the Opotiki or Coromandel areas, wanting part-time work off your own orchard,, we would love to talk to you about employment.

In the office, we have a new office junior, Marise Stuart-Menzies. She lives across the road from the office, making it very handy for work. Marise is picking up the office routine very quickly. Cathy will have to watch she doesn't lose her job.

Owner Operator Refresher Training

Sheryl Wilson from AIC is sending out reminders to Owner Operators that their licence needs renewing in 2014-15. The Refresher Course involves reviewing the AvoGreen PowerPoint, sitting a test (like you did originally) plus a field monitoring assessment. The course takes between 4 and 5 hours on one day.

The course is being held for groups of 4, at a very reasonable cost. You can register through our website or phone us to book in.

Apiarists

A list of Bee Keepers is being prepared to go on our website under 'links'. If you know of any Apiarists who may like to be added to the list, please ask them to contact us at the office or via our website.



Citrus & Flower Growers

It's Kelly's citrus thrip time still and shortly Citrus red mite will be increasing in number. Citrus White fly are a big pest now; Cathy found an email she received back in 2006 warning monitors to look for Citrus white fly making an appearance in the BOP.

2 Spotted mite time is now upon us and the need for compulsory sprays in the flowers. With the hot dry Spring, the arrival of mites will be early.

Pack-out Reports

This is the time of year that you see the fruit of your labours—literally. Your CropCheck monitors are keen to know what your pack-out is to know if they have helped you achieve a good percentage and if you have had any insect damage.

If you feel pest control has not been as good as you hoped, please contact Cathy or Jojette to discuss this.



Six-spotted mite

Numbers of these should naturally decline now that flowering is over, much of the fruit is picked and temperatures have risen. They aren't too keen on the hot dry conditions and we are now seeing large numbers of Stethorus bifidus ladybirds feeding on the little blighters, which will help to drop the numbers naturally. Do keep an eye on them in Autumn though.

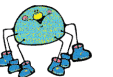
Greenhouse Thrip

We are seeing reasonable numbers of thrip already, due to the warm temperatures. Remember you are at liberty to do 2 sprays for thrip without monitoring for the second if it is applied between 14 and 21 days after the first. This will take care of hatching eggs once the adults are killed.

Leafroller

The small Leafroller we have been seeing in the new shoots are now starting to move into the young fruit. This is much earlier than normal due to the mild Winter and Spring. With the crop looking like a heavy one, the fruit are already touching in some places, which will increase the insects hiding between the young fruit.

One Leafroller spray without a monitor is allowed before the end of January. We suggest, if you are waiting for a late harvest, that you have a monitor to check for Greenhouse thrip, so that cover is maintained before harvest.



Scale

If your rejects from this season's pick show scale, you can apply 1 spray post harvest.

Recipe

A cooler recipe for those hot days:

AVOCADO ICE CREAM

- 3 avocados
- 1/2 tsp salt
- 3/4 cup castor sugar
- 5 tbsp freshly squeezed lemon juice (or lime)
- 3/4 cup cream

Puree the avocados in a food processor, which should give about 2 1/2 cups of puree.

Add the remaining ingredients with the machine running.

Freeze the mixture. I wonder if this would work in an ice-cream maker?



To all our valued clients and associates

**HAVE A
SAFE AND WONDERFUL
CHRISTMAS
AND A
BOUNTIFUL NEW YEAR**

It does look like a good fruit set so far for the new season!

Monitoring Plan Calendars

These were sent to all our clients in August. If you are one of the growers we are chasing for the return of these, please sign and return immediately! We will have an audit coming up shortly; the auditors randomly pick a certain number of growers and check that we have everything in place for each grower, including the Monitoring Plan Calendar.

The Plan is the main basis of compliance for AvoGreen, for which we are responsible on your behalf. If we don't have your Calendar, we cannot show you are compliant. So do yourself a favour and send it in ASAP. Feel free to discuss the monitoring frequencies with us before you sign it and remember to insert the Intended Number of Monitorings (top right on the form).

Changes in your orchard details

Take the time now to inform us of any changes to your contact details, sprayer changes, etc.

Harvesting

Most growers have had at least one pick since September. There is often a need to spray between picks due to Leafroller or thrip. Check with your packhouse about a short withholding period spray they are happy for you to apply. Remember to let your monitor know when you are picking.

Orchard Hazards

Please keep your monitor informed of any new orchard hazards. One hazard that is coming to our attention, is the long grass in some orchards. It is extremely hard to walk through grass that is mid thigh or waist high, let alone not knowing if there are hidden holes or other hazards. Please be considerate and remember you are responsible for the hazards on your property.



ENQUIRE NOW



Monitoring: *Avocado*
Citrus
Flowers
Tamarillo
Other Crops
AvoGreen Training
Soil Testing & Leaf Tests

Due to the untimely hot weather this November...

How hot is it?

The cows are giving evaporated milk.

Chicken farmers are feeding their chickens crushed ice to prevent them laying hard-boiled eggs.

Birds need pot mitts to pull worms out of the soil.

Hot water comes out of every tap.

The trees are whistling for the dogs.

I saw a dog chasing a cat and they were both walking.



Contact: Office 07 544 2201

Cathy Harris mob: 027 235 3919

Jojette Drost mob: 027 246 6303

Email: sales@cropcheck.co.nz

Website: www.cropcheck.co.nz



**PO Box 2007
Seventh Ave Mail Centre
Tauranga 3140**



© CropCheck Limited 2010 - 2013
Some Clipart by GraphicsFactory.com
E.& O.E.