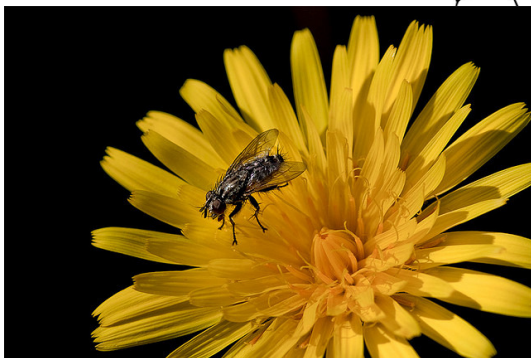




***“Working for the Grower”***



**Newsletter  
April 2015**

## **Soil and Leaf Test Time**

April/May is the best time to carry out soil and leaf tests due to the stable nature of the tree phenology at this time.

Soil sampling is best done before you apply any fertiliser. Book testing now, so these can be carried out by our staff when they come through for monitoring. Sign up on our website to book your test.



We recommend Hills Laboratory and are happy to send the results to your consultant for their recommendations as we do not do the fertilizer recommendations.

## **Tamarillos**

Joette has a Tamarillo Handbook available free to anyone interested. If you are growing Tamarillos, have you considered monitoring for Psylids to see if your sprays are working? The Psylid season is about finished now, but talk to us about monitoring from November onward.



## **Citrus**

Kelly's thrip have been brought under control by fortnightly monitoring and spraying when needed. The next issue may be citrus red mite, which is a secondary pest, appearing when several hard sprays have removed all the predators.

Greenhouse thrip are also prevalent in citrus at this time of year.

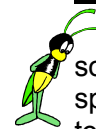
Scale will soon be in crawler stage again, so monitors will be on the lookout for them.

## **Flowers**

Most flower crops are coming to the end of their season. Still look for Leafroller, particularly on the Leukodendron, plus White fly and aphid on the softer foliage.



## **Greenhouse Thrip**



Thrip are now appearing in higher numbers with some damage starting to occur. The back to back sprays using different products 14-21 days apart seem to be working very well.

Once adult thrip are found, they will have laid eggs under the skin, which are protected from sprays until they hatch. One adult can lay several eggs (more in warmer weather) so numbers increase rapidly. At this time of year with cooler evenings, the second spray is best applied closer to 21 days (but no longer) after the first.

## **Leafroller**

This summer has been lighter than most in terms of leafroller infestation—maybe I will eat my words when the pack out reports come in! However, now that we have had rain, it appears to have encouraged the leafroller back. Keep your monitoring rounds to 2 weekly for leafroller and thrip for at least another month, due to the mild conditions.

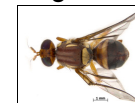
## **Six-spotted mite**

Numbers are rising due to the cooler nights. Please be vigilant about mites in the next months. They have the capacity to explode in number, particularly on trees with high crop and/poor health. We hate to see defoliation due to mites, as this can set the tree back 2 years in terms of return cropping.

Although most mite increases are seen in Autumn and Spring, we have seen defoliation through winter months also. If mite egg numbers are rising, this could be an indicator of population explosion to come.

## **Beneficials**

Good numbers of predatory wasps, lacewing and ladybirds have been seen on healthy orchards. The small black ladybird, *Stethorus bifidus*, is a good predator of mites. The ladybird, *Thripodius* have been seen again this year but not in as high numbers as last season.



## **Queensland Fruit Fly**

The latest on this pest, is no more have been found and the incursion is under control.

## Recipe

This ice cream looks very healthy! Great for the mild evenings and made with creamy late season avocados. Imagine the green ice cream alongside bright red berries! Yum!

### Avocado Ice Cream

1/2 cup lemon juice

1/2 cup orange juice

3/4 cup sugar

1 cup mashed avocado

1 can of well-chilled creamy Carnation Milk

Beat milk until doubled in size.

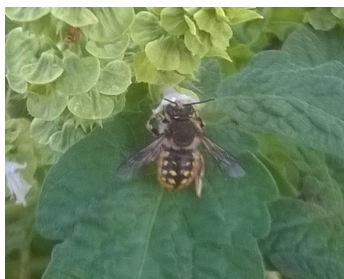
Blend juices, sugar and avocado.

Mix together and freeze.



### Another new Import

Recently Cathy came across a new insect buzzing around her flowering basil plants. It is coloured like a common wasp, but shorter, fatter and hovers. After research, it was found to be a Wool Carder Bee, an illegal import by somebody trying to help improve pollination. The only trouble is, the males are very territorial and attack and kill honey bees. They are increasing rapidly and are now well established in the Bay of Plenty. A very interesting Facebook group called NZ Bug Identification, has been having a lot of discussion about this bee.



### A Little Gift for John Crabtree

Jojetta recently delivered a gift basket to John to say thank you. A report from his orchard was the 5000th to be processed through our office.



## Staff

We will have a vacancy in the north Katikati area soon. If you or anyone you know with crop monitoring experience, would be interested, don't hesitate to contact Cathy or Jojetta (see phone numbers on back of newsletter).

### Reminder from the Office

Please enter your PPIN number (code) and the invoice number you are paying (reference) on the bank payment when you pay by Internet Banking.

If paying by cheque, please include with it the slip from the bottom of the invoice. This makes crediting your payment against your account much easier.



### Happy Birthday

CropCheck Ltd have passed with flying colours in the latest Assure Quality Audit thanks to our good systems and to growers returning the annual Monitoring Plan. With increasing client base and staff that have been with us since the beginning, we are in a strong position as we look to the future. It seems amazing that we are already 5 years old as a company.

Congratulations CropCheck Limited!

### Refresher Training

Owner Operators will soon receive a letter from AIC (if they haven't already) asking that they renew their Avogreen Training. We have a small number of growers lined up for a training soon. Please contact us if you would like to join this training.

### Congratulations

To Mark & Sarah Simmons for receiving the Highest Pack-out Award for Under 2000 trays from Kauripak.

### Keep an Eye Out

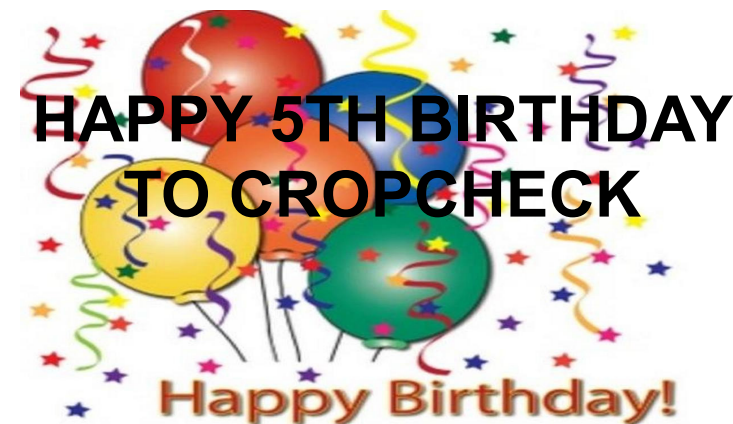
If you see the Brown Marmorated Stink Bug, report them to MAF.



## ***ENQUIRE NOW***



Monitoring: *Avocado*  
*Tamarillo*  
*Flowers*  
*Citrus*  
*Other Crops*  
AvoGreen Training  
Soil Testing & Leaf Tests



**Contact: Office 07 544 2201**

**Cathy Harris mob: 027 235 3919**

**Jojetta Drost mob: 027 246 6303**

**Email: [sales@cropcheck.co.nz](mailto:sales@cropcheck.co.nz)**



**PO Box 2007  
Seventh Ave Mail Centre  
Tauranga 3140**

©CropCheck Limited 2010 - 2014  
Some Clipart by [GraphicsFactory.com](http://GraphicsFactory.com)  
E.& O.E.